



Florida Department of Transportation

CHARLIE CRIST
GOVERNOR

2101 N. 49th Street
Tampa, FL 33605

STEPHANIE C. KOPELOUSOS
SECRETARY

FOR IMMEDIATE RELEASE
November 6, 2008

Contact: John McShaffrey, APR
(813) 233-3837

NEW RAMP TO OPEN / TRAFFIC SIGNALS TO BE REMOVED AT COURTNEY CAMPBELL / MEMORIAL HIGHWAY

TAMPA -- One of the most significant achievements of the Tampa Airport Interchanges project is scheduled to take place Monday morning, November 10, 2008. This is when the Florida Department of Transportation's contractor will open a new ramp from eastbound State Road (S.R.) 60 (Courtney Campbell Parkway) to northbound Memorial Highway/Veterans Expressway, allowing the triple-left traffic signal to be removed at the Courtney Campbell Parkway and Memorial Highway intersection.

While the current traffic signal safely controls traffic, it does have a negative impact of blocking traffic flow westward and northward. Removing this traffic signal is a major step towards making S.R. 60/Memorial Highway a free-flowing corridor in the Tampa International Airport (TPA) area. This traffic signal removal should have a far-reaching, positive impact by improving traffic conditions throughout the Westshore business district, especially on westbound S.R. 60, northbound Memorial Highway, westbound Spruce Street, northbound O'Brien Street, Cypress Street and southbound George Bean Parkway (outbound roadway from TPA).

As the Tampa Airport Interchanges project progresses, additional road and bridge openings will continue to further improve the capacity and traffic flow in all directions of the highways in the TPA area. One improvement is expected by mid-December, when the new eastbound S.R. 60 exit to Spruce Street will open – returning this movement to a right-lane exit (from the current left-lane exit). This will further reduce lane changes on eastbound S.R. 60 and southbound Memorial Highway and improve traffic flow near TPA.

Driving tips for traffic on eastbound S.R. 60

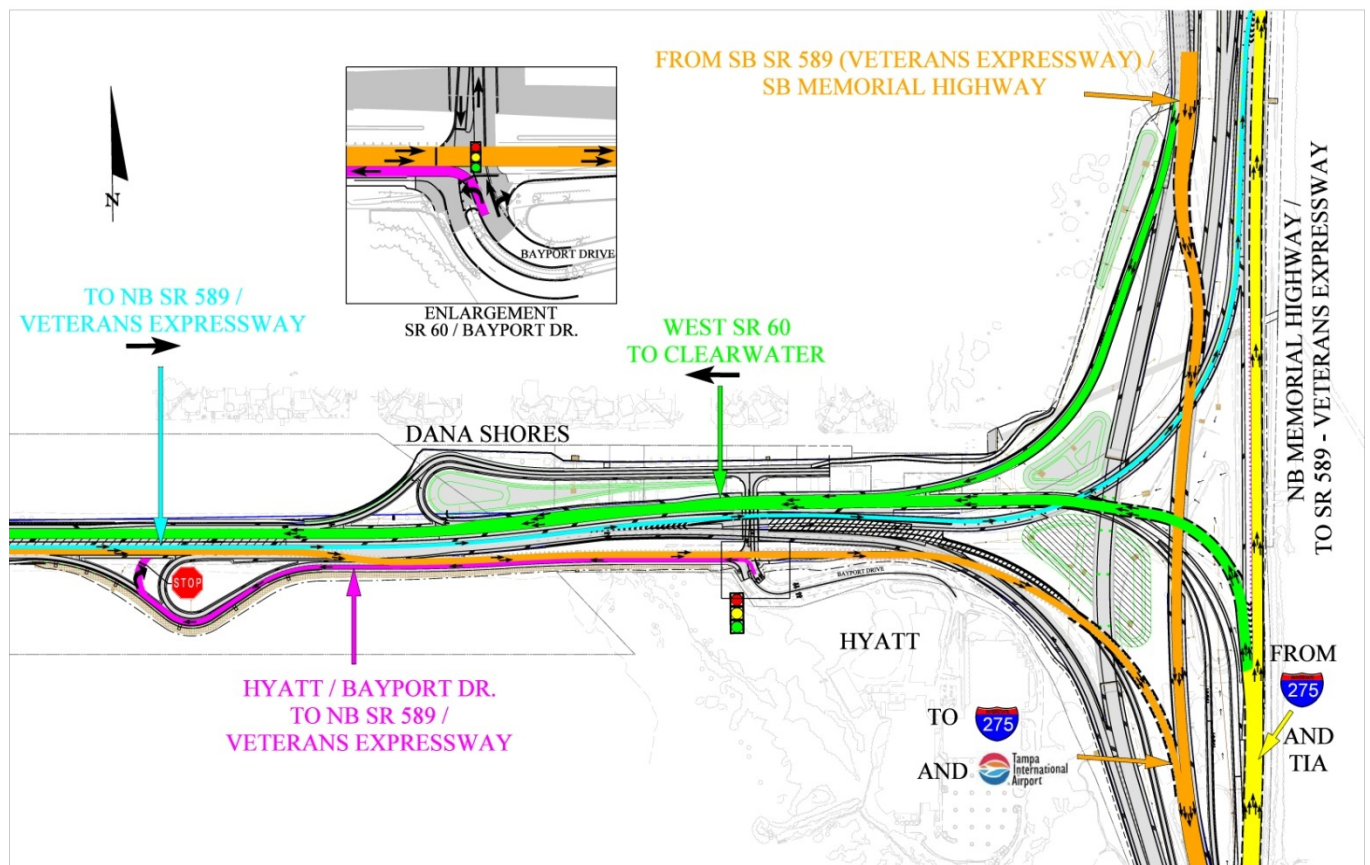
When the new ramp opens from eastbound S.R. 60 (Courtney Campbell) to northbound Memorial Highway/Veterans Expressway, motorists will use the left lane to exit to the ramp and then travel over the bridge at Bayport Drive. The decision point to go north on Memorial Highway/Veterans Expressway will be west of Bayport Drive; motorists are advised to be very alert to this changed condition. The center and right lanes of State Road 60 (Courtney Campbell) will stay at ground level, going southeast toward TPA, Spruce Street and I-275.

Driving tips for traffic leaving the Hyatt/Bayport property

Motorists wishing to go to northbound on Memorial Highway/Veterans Expressway leaving the Hyatt/Bayport will make a left (westward) turn at the traffic signal onto the "frontage road" and travel until the stop sign at eastbound S.R. 60, and then merge into the lane which crosses on the bridge over Bayport Drive. Traffic leaving the Hyatt wishing to go towards the TPA/Spruce Street area will simply make a right turn from Bayport Drive.

By the project's end, all traffic on the Courtney Campbell Parkway, including traffic entering from Bayport Drive, will use the elevated portion of S.R. 60 to go north (towards the Veterans Expressway) or south (towards TPA) on S.R. 60/Memorial Highway.

-30-



map also available for viewing at http://www.mytbi.com/content/images/maps/motrd_map_11.6.2008_resized2.jpg